

Newtok Planning Group October 2019 Update

ROMY CADIENTE, NEWTOK VILLAGE COUNCIL

GAVIN DIXON, ALASKA NATIVE TRIBAL HEALTH CONSORTIUM



Update From Newtok



Erosion Progress



Erosion Progress

Newtok Team

Tribal President: Paul Charles

Relocation Coordinator: Romy Cadiente (Relocation Focus)

Tribal Administrator: Andrew John (Newtok Focus)

Legal Support: Gazewood and Weiner: Michael Walleri, Barrett Ristroph

Financial Support: Yukon Accounting

- Single Audit
- Invoicing, Account Management
- Budgeting

Tribal Funding Management Support: Patrick Lemay

- HMGP, FEMA PDM

Relocation Management, Design and Construction Oversight: ANTHC

ANTHC TEAM

ANTHC Team: Coordination of Relocation – Gavin Dixon

- Design and Construction Management: Bart Adams, Ellie Jackson
- Other: Liz Wulbrecht, Marleah LaBelle, Joe Hess

Design Firms:

- LCG – MEC
- CRW – Water/Sewer
- HDL – Energy, 2018 Roads
- DOWL – Environmental, 2019 Roads
- R&M –Aerial Survey
- Golder – Geotechnical, Geophysics
- CCHRC - Housing

Construction Firms

- UIC – Master Builder for Mertarvik Subdivision
- Brice Inc. – Quarry Development

Goal 1: Occupy Mertarvik by Fall 2019

~100-150 people

21 Year Round Occupied Homes

Electricity

Self Haul Water

PASS Sewer Disposal

No Airport

No Clinic

No Running Water and Sewer

Goal 2 : Safety for Population by 2023

~380 people

Aligns with Newtok Erosion Advancement

65 Year Round Occupied Homes

Requires Significant Funding

School

DOT Airport

Clinic

Partial Running Water/Sewer

Goal 3: Complete Relocation by 2027

~450-500 people

Clean up former occupied site

80-100 Homes

Full Running Water and Sewer

Economic Development

Renewable Energy

Recent Accomplishments

Housing Completion

MEC Progress

Quarry Development

IRT Involvement Summer 2019



Rock Quarry Development



Rock Quarry Development



Four Homes Completed by AVCP



Four Homes Completed by AVCP



Mertarvik Evacuation Center



View from the MEC



2019 IRT Participation Confirmed

New 2018 Construction Activities

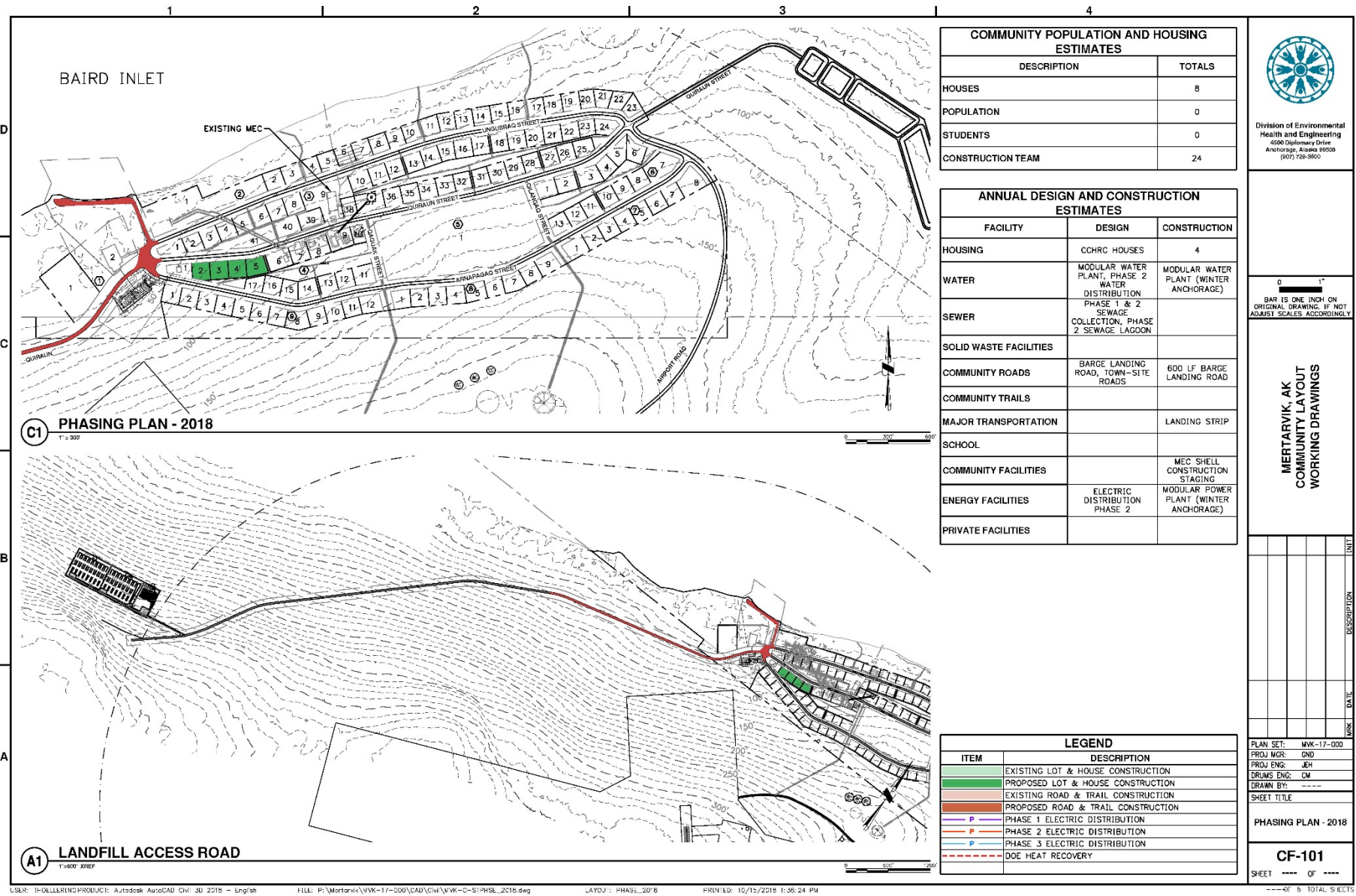
Barge Landing Road

Landing Strip / Wide Road

Equipment Fleet Repair

Construction Fuel Farm Expansion





2018 Construction

2018 Design Activities

Aerial Survey

- Additional Lidar, Ortho, RTK

Geophysics

- Fills in Gaps from all previous Geotechnical

Wetlands Re- Delineation

- Update wetlands inventory to inform permitting, mitigation requirements

2019 Housing / 2020 Housing Alternatives

2019 Townsite Roads

Equipment Shop

Phase I Water – Sewer

- Camp Services for Summer 2019
- Modular Water Plant for up to 200 people, serve camps, MEC
- Gravity Sewer to Lagoon: Serve Camps, MEC

2019 Planned Construction

13 Homes

Modular Power Plant

Phase I Bulk Fuel Farm

MEC Interior

Modular Water Plant

Landfill

Equipment Shop

Phase I Water/Sewer Service, PASS

Roads, Electric Distribution to above infrastructure



Recent/Active Funding Acquired

Denali Commission

- State of Alaska: Transportation (Roads)

State of Alaska : Bulk Fuel Phase I

State of Alaska: Housing (2019 Housing)

Department of Energy (Heat Recovery)

UMCOR (P.A.S.S.)

USDA RD Water Treatment and Hydrogeology

DMVA HMGP (7 Home Buyout)

FEMA PDM (13 House Pad Construction)

BIA TTP FY17, FY18 (Some Mertarvik Roads)

BIA HIP FY17, FY18 (Future Mertarvik Housing)

BIA Tribal Resilience (Environmental Data Atlas)

HUD IT FY16 (2 Homes)

HUD IT FY17 (MEC Mechanical and Electrical)

SOA MEC (Shell)

Active Applications

AHFC:

- LKSD – Teacher Housing
- NVC – Teacher / VPO / Health Aide Housing

NOAA

- Communication and Engagement – Guidebook Development

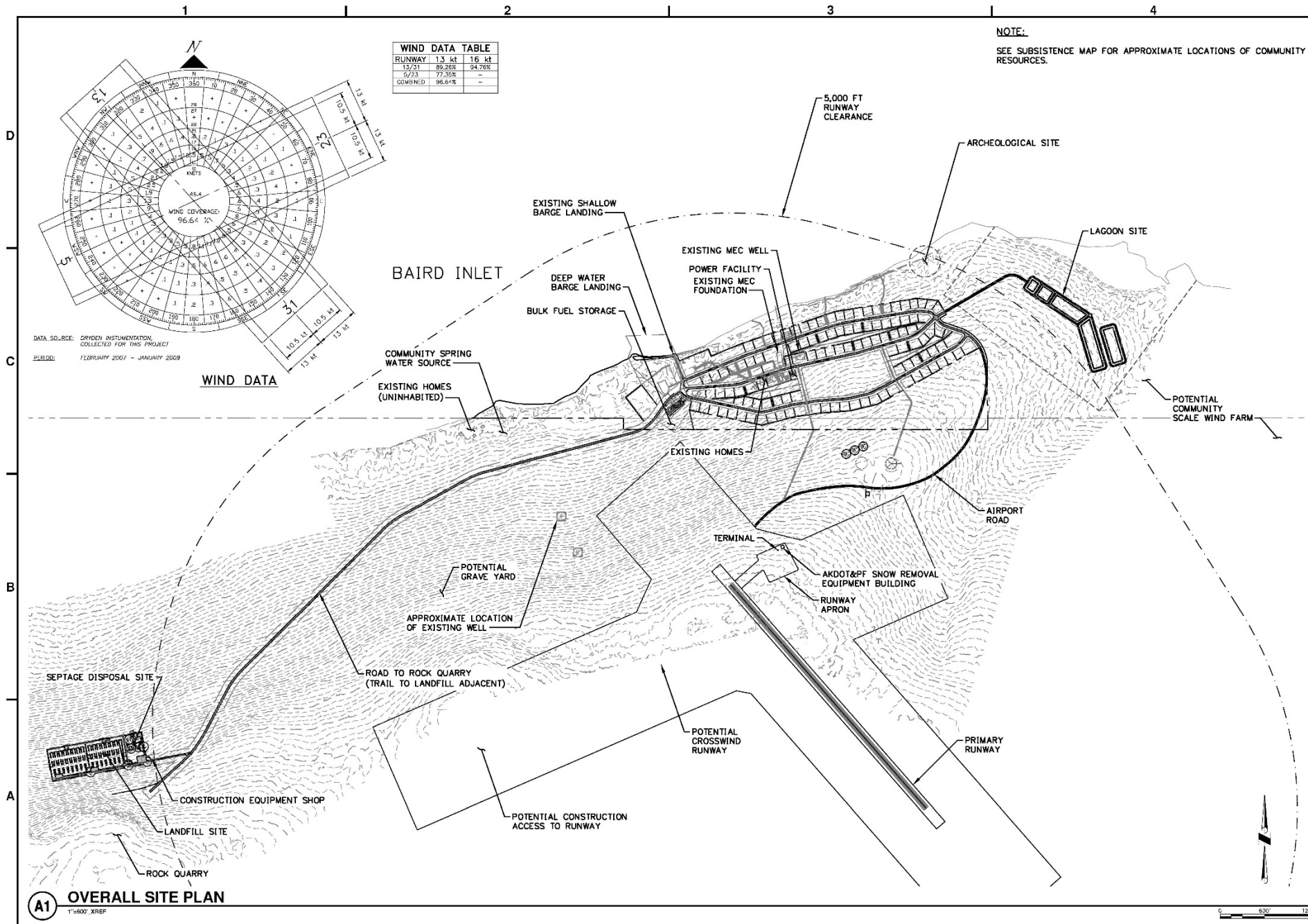
NFWF

- Newtok Clean Up

HUD ONAP TA

- Housing Priority Plan

HUD FY18 IT



Division of Environmental
Health and Engineering
4500 Diplomat Drive
Anchorage, Alaska 99508
(907) 729-9600

0 1"
BAR IS ONE INCH ON
ORIGINAL DRAWING. IF NOT
ADJUST SCALES ACCORDINGLY

MERTARVIK, AK
COMMUNITY LAYOUT
WORKING DRAWINGS

NO.	DESCRIPTION	DATE	INIT.

PLAN SET: MWK-17-000
PROJ MGR: GND
PROJ ENG: JEH
DRUMS ENG: CM
DRAWN BY: JEH
SHEET TITLE

OVERALL SITE PLAN

C-100

SHEET 1 OF 2

1 OF 8 TOTAL SHEETS

