

**SPECIAL ASSEMBLY MEETING  
THE CITY AND BOROUGH OF JUNEAU, ALASKA**

March 22, 2020 10:00 AM

Assembly Chambers - Municipal Building

**I. CALL TO ORDER / ROLL CALL**

**II. APPROVAL OF AGENDA**

**III. AGENDA TOPICS**

**A. Resolution 2885(b) A Resolution Mandating People in the City and Borough of Juneau Hunker Down Related to COVID-19**

As the COVID-19 pandemic spreads into Alaska, Assemblymembers raised concerns that the City & Borough of Juneau should impose additional social distancing measures. This resolution would do three things (1) order people to stay home as much as possible, (2) order non-critical businesses to close to the public, and (3) order critical businesses that stay open to comply with social distancing guidelines as much is possible. This resolution would expire in two weeks. Version (b) of this resolution reflects an revision by the makers to change the effective date.

One option for the Assembly would be to discuss this resolution today and set it for public hearing and action at a Special Assembly meeting on Monday night.

**B. Resolution 2886 A Resolution Mandating People Traveling into the City and Borough of Juneau Must Quarantine Related to COVID-19**

As the COVID-19 pandemic spreads into Alaska, Assemblymembers raised concerns that the City & Borough of Juneau should impose additional social distancing measures. This resolution would require people traveling into the City and Borough of Juneau by plane or boat from outside of Alaska or from a community with confirmed COVID-19 cases to self-quarantine for 14 days.

One option for the Assembly would be to discuss this resolution today and set it for public hearing and action at a Special Assembly meeting on Monday night.

**C. Assembly Communications with Emergency Operations Center**

There are no packet materials for this item.

**IV. PUBLIC PARTICIPATION ON NON-AGENDA ITEMS**

**V. ADJOURNMENT**

Presented by: Hale, Smith, Gladyszewski  
Presented: 3/22/2020  
Drafted by: R. Palmer III

**RESOLUTION OF THE CITY AND BOROUGH OF JUNEAU, ALASKA**

**Serial No. 2885(b)**

**A Resolution Mandating People in the City and Borough of Juneau  
Hunker Down Related to COVID-19**

A. WHEREAS, COVID-19 is a respiratory disease that can result in serious illness or death and is caused by the SARS-Cov-2 virus (“virus”), a new strain of the coronavirus that has not been previously identified in humans and is easily transmittable person to person; and

B. WHEREAS, on March 11, 2020, the World Health Organization (“WHO”) declared the virus a pandemic; and

C. WHEREAS, on March 11, 2020, the State of Alaska declared a public health emergency in response to the anticipated outbreak of the virus in Alaska; and

D. WHEREAS, on March 13, 2020, President Donald J. Trump declared a national emergency in response to the virus pandemic; and

E. WHEREAS, on March 16, 2020, the Assembly declared a local emergency in response to COVID-19; and

F. WHEREAS, as of March 20, 2020, the State of Alaska had 14 confirmed COVID-19 cases; and

G. WHEREAS, as of March 20, 2020, the State of Alaska had issued eight health mandates including closing schools until May 1, 2020; and

H. WHEREAS, as of March 20, 2020, the neighboring municipality of the Ketchikan Gateway Borough had three confirmed COVID-19 cases, which included a person that had recently traveled to the City & Borough of Juneau; and

I. WHEREAS, on March 20, 2020, the State of Alaska issued health mandate 7.1 that generally prohibited close contact with people by prohibiting personal care services and gatherings of 10 or more people in two municipalities, including the Ketchikan Gateway Borough; and

J. WHEREAS, the City & Borough of Juneau is linked to the Ketchikan Gateway Borough by daily commercial air traffic; and

K. WHEREAS, this resolution is akin to an emergency declaration and is reasonable and necessary under the circumstances to protect the public, health, welfare, and safety in the City & Borough of Juneau; and

L. WHEREAS, entities that provide services for unsheltered people are urged to make shelter space available as soon as possible and to the maximum extent possible in compliance with COVID-19 risk mitigation practices; and

M. WHEREAS, people particularly at risk of complications from COVID-19 include those 60 years and older and individuals of any age with a serious underlying medical condition. Household members of those who are at elevated risk should implement these more stringent guidelines as well, to the extent possible; and

N. WHEREAS, anyone particularly at-risk from COVID-19 should reduce exposure by staying at home, not physically going to work, and not doing their own shopping if possible; and

O. WHEREAS, this resolution shall have the same effect as a rule issued by the Manager pursuant to CBJC 03.25.040(b)(6).

NOW, THEREFORE, BE IT RESOLVED BY THE ASSEMBLY OF THE CITY AND BOROUGH OF JUNEAU, ALASKA:

**Section 1.** This resolution may also be referred to as “CBJ COVID-19 Rule 1.”

**Section 2. Stay Home Order.** All people in the City & Borough of Juneau shall stay at home as much as possible, except to work in critical jobs, listed below; to buy, sell, or deliver groceries or other important goods such as those sold by critical businesses; to receive or provide health care; and to get fresh air without contacting others. On the limited occasions when individuals leave home, they should maintain social distancing of at least six feet from any person outside their household whenever possible. Individuals are also encouraged to practice recommended hygiene, including regular hand washing. Individuals experiencing homelessness are exempt from this order.

**Section 3. Non-critical Business Closure Order.** All non-critical businesses and entities must close their premises to the public; however, businesses and entities are encouraged to use telecommuting or work from home procedures.

**Section 4. Social Distancing Order for Critical Businesses or Entities.** All critical businesses or entities that remain open must comply with social distancing guidelines as much as possible, including by maintaining six-foot social distancing for employees and members of the public.

**Section 5. Definition of critical business or entity.** A critical business or entity includes the following regardless whether it is for profit, not for profit, or other entity:

- (a) "Healthcare Operations" including hospitals, clinics, dentists, ophthalmologists and optometrists, chiropractors, pharmacies, medical laboratories, other healthcare facilities and providers, home healthcare services providers, mental health providers, companies and institutions involved in the research and development, manufacture, distribution, warehousing, or supplying of pharmaceuticals, biotechnology therapies, consumer health products, medical devices, diagnostics, equipment, services, or any related and/or ancillary healthcare services. "Healthcare Operations" also includes veterinary care and healthcare services provided to animals. "Healthcare Operations" does not include fitness, exercise gyms, massage therapy locations, or similar facilities.
- (b) Businesses providing any services or performing any work necessary to the operations and maintenance of "Critical Infrastructure," including, but not limited to, the barge services, public works construction, construction of housing, airport operations, water, sewer, gas, electrical, utility, mineral production, roads and highways, trucking and shipping companies, public transportation, solid waste collection and removal, internet, and telecommunications systems;
- (c) First responders, emergency management personnel, emergency dispatchers, court personnel, and law enforcement personnel;
- (d) Critical Government Functions means the judiciary, the legislature, and all services needed to ensure the continuing operation of the government agencies that provide for the health, safety, and welfare of the public. Federal, Tribal, and State of Alaska employees should follow direction of their employer regarding whether and where to report to work;
- (e) Defense and national security-related operations supporting the U.S. Government or a contractor to the U.S. government;
- (f) Grocery stores, supermarkets, food banks, marijuana dispensaries, convenience stores, and other similar establishments engaged in the retail sale of food, beverages, or other household consumer products (such as cleaning and personal care products, pet food and pet supplies). This includes stores that sell groceries and also sell other non-grocery products, as well as stores that sell products necessary to maintaining the safety, sanitation, and operation of residences;
- (g) Food cultivation, including fishing, hunting, farming, and livestock;
- (h) Businesses that provide food, shelter, and social services, and other necessities of life for economically disadvantaged, unsheltered, or otherwise vulnerable individuals;
- (i) Newspapers, television, radio, and other media services;

- (j) Gas stations and auto-supply, auto-repair, towing companies, and related facilities;
- (k) Banks, mortgage companies, insurance companies, and related financial institutions;
- (l) Hardware stores;
- (m) Plumbers, electricians, exterminators, and other service providers who provide services that are necessary to maintaining the safety, sanitation, and operation of residences and critical businesses;
- (n) Businesses providing mailing and shipping services;
- (o) Educational institutions for purposes of facilitating distance learning;
- (p) Laundromats, dry cleaners, and laundry service providers;
- (q) Restaurants, bars, and breweries and other facilities that prepare and serve food and beverages, but only for delivery or carry out under the restrictions described in the State of Alaska Health Mandate 3;
- (r) Businesses that supply products needed for people to work from home;
- (s) Businesses that supply other critical businesses with the support or supplies necessary to operate;
- (t) Businesses that ship or deliver groceries, food, goods or services directly to residences;
- (u) Businesses that provide transportation services of passengers or goods, including the Alaska Marine Highway System;
- (v) Home-based care for seniors, adults, or children;
- (w) Hotels, residential facilities and shelters for seniors, adults, and children;
- (x) Professional services, such as legal or accounting services, that do not involve close personal contact or that are necessary to assist in compliance with legally mandated activities, to complete time sensitive activities, or activities related to or caused by COVID-19;
- (y) Labor union essential activities;
- (z) Childcare facilities, subject to new recommendations for increased hygiene and social distancing. Childcare facilities should be used only by those who need childcare to work at a critical job.

(aa) Funeral, mortuary, cremation, burial, cemetery, and related services.

**Section 5. Procedural Due Process.** If a business or entity is not listed above, and the business owner or authorized agent believes that the business or entity is critical or it is an entity providing critical services or functions, the business may request a determination from the Manager, or designee.

**Section 6. Effective Date and Duration.** Section 1 shall be effective immediately after this resolution is adopted. Sections 2-5 of this resolution shall be effective at 10:00 p.m. the date of the first COVID-19 case is confirmed in the City and Borough of Juneau. A public service announcement shall be widely distributed providing public notice of the orders in this resolution. This resolution shall remain in effect for fourteen days, including the day of COVID-19 confirmation, and automatically expire at 10:00 p.m. on the fourteenth day.

Adopted this \_\_\_\_\_ day of \_\_\_\_\_, 2020.

---

Beth A. Weldon, Mayor

Attest:

---

Elizabeth J. McEwen, Municipal Clerk

Office of the Mayor

Phone: (907) 343-7100

*Mayor Ethan A. Berkowitz*

**MUNICIPALITY OF ANCHORAGE  
PROCLAMATION OF EMERGENCY  
“HUNKER DOWN” ORDER  
EO-03**

ISSUED BY THE MAYOR OF THE MUNICIPALITY OF ANCHORAGE PURSUANT TO ANCHORAGE MUNICIPAL CODE SECTION 3.80.060H.

The COVID-19 pandemic has generated a public health emergency that threatens to overwhelm our health system, endangering the lives and wellbeing of the people of Anchorage. We can take steps to slow and hopefully contain the threat, but those steps require coordinated community action. This order is put forward to preserve the health and safety of our community while ensuring that vital goods and services continue to be available.

I HEREBY ORDER THE FOLLOWING EMERGENCY RESPONSE TO PRESERVE LIFE IN AND ADJACENT TO THE MUNICIPALITY. THE FOLLOWING EMERGENCY REGULATIONS BEGIN AT 10:00 P.M. ON SUNDAY, MARCH 22, 2020 AND REMAIN IN EFFECT UNTIL 11:59 P.M. ON TUESDAY, MARCH 31, 2020.

1. Everyone currently in the Municipality of Anchorage (the “Municipality”) shall stay at home as much as possible, except to work in certain critical jobs, listed below; to buy, sell, or deliver groceries or other important goods; to receive or provide health care; and to get fresh air without contacting others. On the limited occasions when individuals leave home, they should maintain social distancing of at least six feet from any person outside their household whenever possible. Individuals are also encouraged to practice recommended hygiene, including regular hand washing.
  - Individuals experiencing homelessness are exempt from this Section, but are strongly urged to obtain shelter, and entities are strongly urged to make such shelter available as soon as possible and to the maximum extent practicable (and to use COVID-19 risk mitigation practices in their operation).
2. It is strongly recommended, in accordance with Center for Disease Control (CDC) guidance, that certain individuals within the Municipality should take even greater precaution.
  - a. Anyone particularly at-risk from COVID-19 should reduce exposure by staying at home, not physically going to work, and not doing their own shopping if possible. People particularly at risk of complications from COVID-19 include those 60 years and older and individuals of any age with a serious underlying medical condition. Household members of those who are at elevated risk should implement these more stringent guidelines as well, to the extent possible.

- a. Anyone more likely to be contagious with COVID-19 should reduce contact with others even further by not leaving home except to obtain medical care or to get fresh air. People who are more likely to be contagious include individuals exhibiting symptoms of COVID-19 (including coughing, shortness of breath, and fever) and individuals who have recently traveled. Individuals who have recently travelled outside the Municipality are advised, in accordance with CDC guidelines, to stay at home as much as possible for fourteen days. Household members of those who are possibly contagious should implement these more stringent guidelines as well, to the extent possible.
3. Some businesses and entities serve critical roles that are necessary to combat this public health emergency or provide critical community functions and cannot be put on hold while we address the emergency. These businesses and entities are encouraged to remain open. While open, those businesses and entities should comply with social distancing guidelines as much as possible, including by maintaining six-foot social distancing for employees and for members of the public, including when any customers are standing in line. A list of businesses defined as critical is listed below at paragraph number five.
  4. All other businesses and entities in the Municipality must close their premises; however, businesses and entities may continue to utilize telecommuting or work from home procedures.
  5. Critical businesses (to include non-profit and other entities) include:
    - a. "Healthcare Operations" including hospitals, clinics, dentists, pharmacies, other healthcare facilities, home healthcare services providers, mental health providers, companies and institutions involved in the research and development, manufacture, distribution, warehousing, and supplying of pharmaceuticals, biotechnology therapies, consumer health products, medical devices, diagnostics, equipment, services, or any related and/or ancillary healthcare services. "Healthcare Operations" also includes veterinary care and healthcare services provided to animals. "Healthcare Operations" does not include fitness and exercise gyms and similar facilities. Healthcare operations remain subject to the restrictions in the Mayor's Emergency Order EO-02. To expand the capacity and supply of Healthcare Operations necessary for the response to the COVID-19 pandemic, all Healthcare Operators shall postpone appointments that are non-urgent or non-emergency whenever possible, and consider alternatives to face-to-face visits, in accordance with CDC guidance for Healthcare Facilities.
    - b. Businesses providing any services or performing any work necessary to the operations and maintenance of "Critical Infrastructure," including, but not limited to, the Port of Alaska, public works construction, construction of housing, airport operations, water, sewer, gas, electrical, oil production, roads and highways, trucking and shipping companies, public transportation, solid waste collection and removal, internet, and telecommunications systems;
    - b. First responders, emergency management personnel, emergency dispatchers, court personnel, and law enforcement personnel;
    - c. Critical Government Functions, meaning all services needed to ensure the continuing operation of the government agencies and provide for the health, safety, and welfare of the public. Federal and State of Alaska employees should follow direction of their employer regarding whether and where to report to work;
    - d. Defense and national security-related operations supporting the U.S. Government or a contractor to the U.S. government;



- e. Grocery stores, supermarkets, food banks, marijuana dispensaries, convenience stores, and other establishments engaged in the retail sale of food, beverages, or other household consumer products (such as cleaning and personal care products, pet food and pet supplies). This includes stores that sell groceries and also sell other non-grocery products, as well as stores that sell products necessary to maintaining the safety, sanitation, and operation of residences;
- f. Food cultivation, including fishing, hunting, farming, and livestock;
- g. Businesses that provide food, shelter, and social services, and other necessities of life for economically disadvantaged, unsheltered, or otherwise vulnerable individuals;
- h. Newspapers, television, radio, and other media services;
- i. Gas stations and auto-supply, auto-repair, towing companies, and related facilities;
- j. Banks, mortgage companies, insurance companies, and related financial institutions;
- k. Hardware stores;
- l. Plumbers, electricians, exterminators, and other service providers who provide services that are necessary to maintaining the safety, sanitation, and operation of residences and critical businesses;
- m. Businesses providing mailing and shipping services;
- n. Educational institutions for purposes of facilitating distance learning;
- o. Laundromats, dry cleaners, and laundry service providers;
- p. Restaurants, bars, and breweries and other facilities that prepare and serve food and beverages, but only for delivery or carry out under the restrictions laid out in the Mayor's Emergency Order E0-01;
- q. Businesses that supply products needed for people to work from home;
- r. Businesses that supply other critical businesses with the support or supplies necessary to operate;
- s. Businesses that ship or deliver groceries, food, goods or services directly to residences;
- u. Businesses that provide transportation services of passengers or goods, including the Alaska Railroad;
- v. Home-based care for seniors, adults, or children;
- w. Hotels, residential facilities and shelters for seniors, adults, and children;
- x. Professional services, such as legal or accounting services, when necessary to assist in compliance with legally mandated activities;
- y. Childcare facilities, subject to new recommendations for increased hygiene and social distancing. Childcare facilities should be used only by those who need childcare to work at a critical job.

Packet Page 10 of 16  
If your business is not listed above, but you believe that it is critical or it is an entity providing critical services or functions, you may request an opinion from the Mayor that your business should be designated a critical business.

DATED this 20th day of March, 2020.



---

Ethan Berkowitz, Mayor  
Municipality of Anchorage, Alaska



THE STATE  
of **ALASKA**  
GOVERNOR MIKE DUNLEAVY

# **\*\*COVID-19 HEALTH ALERT\*\***

Issued March 20, 2020

By: Dr. Anne Zink, Chief Medical Officer, State of Alaska  
Commissioner Adam Crum, Alaska Department of Health and Social Services

The State of Alaska and the Alaska Department of Health and Social Services (DHSS) acknowledge the importance of suspending all non-essential travel across the Alaska border as well as minimizing intrastate travel to avoid introducing new COVID-19 cases into Alaska from out of state, and slow the spread of the virus in state. Greater than 80% of proven COVID-19 cases have come from out of state, primarily from the lower 48. It is imperative that Alaskans heed these guidelines.

## **Health Alert 9.1 – Out of State Travel**

To prevent the spread of Coronavirus Disease 2019 (COVID-19), the State of Alaska is issuing the following strong advisory:

That all Alaskans cease non-essential out of state personal, business, and medical travel now. Alaskans currently out of state are encouraged to return home now if they had plans to return to Alaska within the next 30 days

We strongly advise that any tourist and non-essential business travel to Alaska be suspended now. We strongly recommend that visitors to Alaska return to their home communities now.

Airlines operating interstate travel are mandated to immediately post this recommendation to their customers on their webpages and at the airports in a place that is easily seen.

Airports in Alaska are mandated to prominently post all travel recommendations.

Tour operators should immediately suspend reservations for any out of state visitors.

Businesses that depend on interstate travel should immediately assess their travel needs and only move essential personnel or travel for emergency reasons. Any travelling employee is expected to self-isolate for 14 days after arrival in Alaska.

All travelers returning from a Level 3 area are mandated to self-quarantine for 14 days as previously outlined in COVID-19 Health Mandate 004.

Any returning resident or worker is expected to self-quarantine for 14 days after returning to Alaska and monitor for illness. If you cannot work from home, you should not return to work until this period has passed, unless your work supports critical infrastructure (see Attachment A). If your work is a part of critical infrastructure, it is the expectation that every attempt will be made to comply with the 14-day quarantine or that appropriate steps are taken to protect workers, the public and spread of COVID-19.

Any visitor to Alaska is expected to self-isolate for 14 days after arriving in Alaska, monitor for illness, and follow appropriate social distancing protocols while in Alaska.

### **Health Alert 9.2 – In-State Alaska Travel:**

To prevent the spread of Coronavirus Disease 2019 (COVID-19), the State of Alaska is issuing the following strong advisory:

That all Alaskans cease any non-essential in-state long distance personal, business, or medical travel, with specific heightened concern for travel to remote areas with limited medical resources.

We strongly recommend that non-residents cease any non-essential personal, business, or medical long-distance travel within Alaska with specific heightened concern for travel to remote areas with limited medical resources.

All air, road and maritime services operating in Alaska are mandated to post on the web and in their terminals, these travel recommendations.

All airports, ports, and bus terminals are mandated to prominently post these travel recommendations.

Any tour operator depending on clients moving long distances across Alaska should strongly consider suspending operations.

We expect any traveler who leaves a community with known cases of COVID-19 to self-isolate for 14 days upon arrival to their destination community and monitor for symptoms of illness. Following that period, appropriate social distancing should be followed.

The sacrifice of all Alaskans during this public health emergency is notable. While social distancing is one arm of slowing the spread of COVID-19, minimizing travel is an equally important part of slowing the spread of disease. We are aware of the impact these health advisories have, specifically on our travel industry, already hit hard by the coronavirus pandemic. The state is committed to continue to work with businesses and employees impacted by the pandemic and will continue to work to mitigate these impacts. The safety and health of all Alaskans is our primary concern.

This health advisory does not apply to medical, personal, or business emergencies.

This is not a mandate.  
State of Alaska COVID-19 Health Alert 009

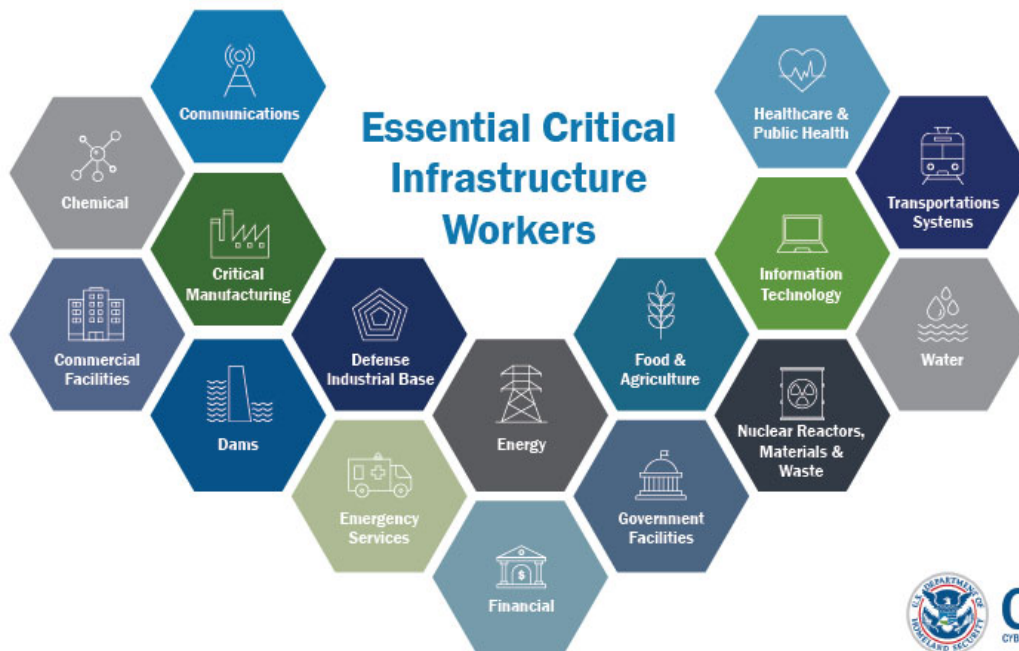
Visit the State of Alaska's COVID-19 website at [coronavirus.alaska.gov](https://coronavirus.alaska.gov) for more information

## Attachment A Critical Workforce Infrastructure

Functioning critical infrastructure is imperative during the response to the COVID-19 emergency for both public health and safety as well as community well-being. Certain critical infrastructure industries have a special responsibility in these times to continue operations.

Guidance on essential critical infrastructure workforce can be found on the [Cybersecurity and Infrastructure Security Agency \(CISA\)](https://www.cisa.gov) website. For the State of Alaska, critical workforce and industries include, but are not limited to:

- Transportation and logistics
- Agricultural operations, including fishing and fish-processing
- Energy – including oil and gas production
- Critical Manufacturing
- Raw material production for manufacturing, including mining and timber
- Water, wastewater and sanitation
- Government functions
- Public safety and first responders
- Healthcare & Public Health
- Financial services
- Communications
- Defense





Governor Michael J. Dunleavy  
STATE OF ALASKA

**\*\*COVID-19 HEALTH MANDATE\*\***

Issued: March 17, 2020

By: Governor Mike Dunleavy  
Commissioner Adam Crum, Alaska Department of Health and Social Services  
Dr. Anne Zink, Chief Medical Officer, State of Alaska

To prevent or slow the spread of Coronavirus Disease 2019 (COVID-19), the State of Alaska is issuing its fourth health mandate.

**Higher Risk:** If you have traveled from an area with *widespread, ongoing community spread* such as Europe, China, and other countries (i.e., a [CDC Level 3 Travel Health Notice Area](#)) and are entering Alaska within the past 14 days **you must:**

- Stay home and avoid contact with other household members.
- Contact your employer and **do not go to work or school** for this 14-day period after you return.
- [CDC Level 3 Travel Health Notice Area](#)
  - China, Iran, South Korea, Austria, Belgium, Czech Republic, Denmark, Estonia, Finland, France, Germany, Greece, Hungary, Iceland, Italy, Latvia, Liechtenstein, Lithuania, Luxembourg, Malta, Netherlands, Norway, Poland, Portugal, Slovakia, Slovenia, Spain, Sweden, Switzerland, Monaco, San Marino, Vatican City.

**Medium Risk:** If you have traveled anywhere outside of Alaska, (including the rest of the United States) within the past 14 days **you must:**

- Keep your distance from others (about six feet or two meters)
- This may mean not going to work or school if you cannot safely be distanced from others – especially if you traveled in a location where community transmission is occurring – **contact your employer.**
- **You must** avoid crowded places (such as shopping centers and movie theaters) and limit your activities in public.

**Health Guidance for Returning Travelers in the Higher and Medium Risk Groups**

1. Take your temperature with a thermometer two times a day and monitor for fever. Also watch for cough or trouble breathing.
2. If you get sick with fever (>100.3°F), cough, or shortness of breath, please call your health care provider.
3. Do not take mass transportation during the time you are practicing social distancing.
4. Avoid crowded places (such as shopping centers and movie theaters) and limit your activities in public.
5. Keep your distance from others (about 6 feet or 2 meters).
6. If you seek medical care for other reasons, such as dialysis, call ahead to your doctor and tell them about your recent travel.

All Alaskans should follow previous guidance including regular hand washing, cleaning surfaces and avoiding large gatherings ([March 13 COVID-19 Health Alert: Recommendations for Keeping Communities Safe](#)).

Presented by: Hale, Smith, Gladyszewski  
Presented: 3/22/2020  
Drafted by: R. Palmer III

**RESOLUTION OF THE CITY AND BOROUGH OF JUNEAU, ALASKA**

**Serial No. 2886**

**A Resolution Mandating People Traveling into the City and Borough of Juneau Quarantine Related to COVID-19**

A. WHEREAS, COVID-19 is a respiratory disease that can result in serious illness or death and is caused by the SARS-Cov-2 virus (“virus”), a new strain of the coronavirus that has not been previously identified in humans and is easily transmittable person to person; and

B. WHEREAS, on March 11, 2020, the World Health Organization (“WHO”) declared the virus a pandemic; and

C. WHEREAS, on March 11, 2020, the State of Alaska declared a public health emergency in response to the anticipated outbreak of the virus in Alaska; and

D. WHEREAS, on March 13, 2020, President Donald J. Trump declared a national emergency in response to the virus pandemic; and

E. WHEREAS, on March 16, 2020, the Assembly declared a local emergency in response to COVID-19; and

F. WHEREAS, on March 17, 2020, the State of Alaska issues health mandate 4, which required high risk travelers to quarantine for 14-days and required medium risk travelers to stay about six feet away from people; and

G. WHEREAS, on March 19, 2020, the Assembly adopted a motion encouraging the Governor to restrict non-essential travel to communities like the City & Borough of Juneau; and

H. WHEREAS, as of March 20, 2020, the neighboring municipality of the Ketchikan Gateway Borough had three confirmed COVID-19 cases, which included a person that had recently traveled to the City & Borough of Juneau; and

I. WHEREAS, on March 20, 2020, the State of Alaska issued health mandate 7.1 that generally prohibited close contact with people by prohibiting personal care services and gatherings of 10 or more people in two municipalities, including the Ketchikan Gateway Borough; and

J. WHEREAS, on March 20, 2020, the State of Alaska issued health alert 9, which strongly advised travelers to take additional social distancing and quarantine measures and identified that 80% of proven COVID-19 cases originally came from out of state; and

K. WHEREAS, as of March 21, 2020, the State of Alaska had 17 confirmed COVID-19 cases, including six cases in Ketchikan; and

L. WHEREAS, the City & Borough of Juneau is linked to the Ketchikan Gateway Borough by daily commercial air traffic; and

M. WHEREAS, this resolution is akin to an emergency declaration and is reasonable and necessary under the circumstances to protect the public, health, welfare, and safety in the City & Borough of Juneau; and

N. WHEREAS, this resolution shall have the same effect as a rule issued by the Manager pursuant to CBJC 03.25.040(b)(6).

NOW, THEREFORE, BE IT RESOLVED BY THE ASSEMBLY OF THE CITY AND BOROUGH OF JUNEAU, ALASKA:

**Section 1.** This resolution may also be referred to as “CBJ COVID-19 Rule 2.”

**Section 2. Traveler Quarantine Order.** Any person traveling into the City and Borough of Juneau by vessel or airplane that came from outside of Alaska or that came from a community with known cases of COVID-19 is required to self-quarantine for 14 days upon arriving at their destination and monitor for symptoms of illness. During travel and following the quarantine period, appropriate social distancing measures must be followed.

**Section 3. Effective Date.** This resolution shall be effective immediately after its adoption. This resolution shall remain in effect through April 16, 2020.

Adopted this \_\_\_\_\_ day of \_\_\_\_\_, 2020.

\_\_\_\_\_  
Beth A. Weldon, Mayor

Attest:

\_\_\_\_\_  
Elizabeth J. McEwen, Municipal Clerk